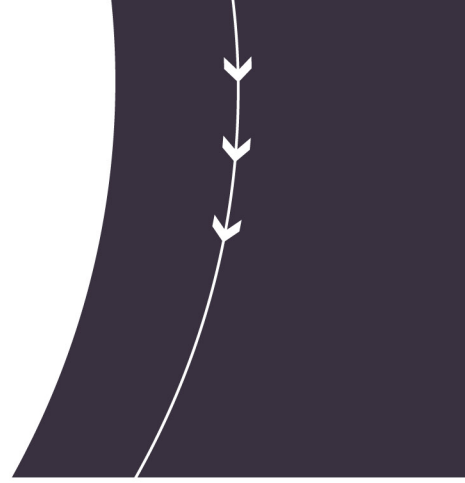
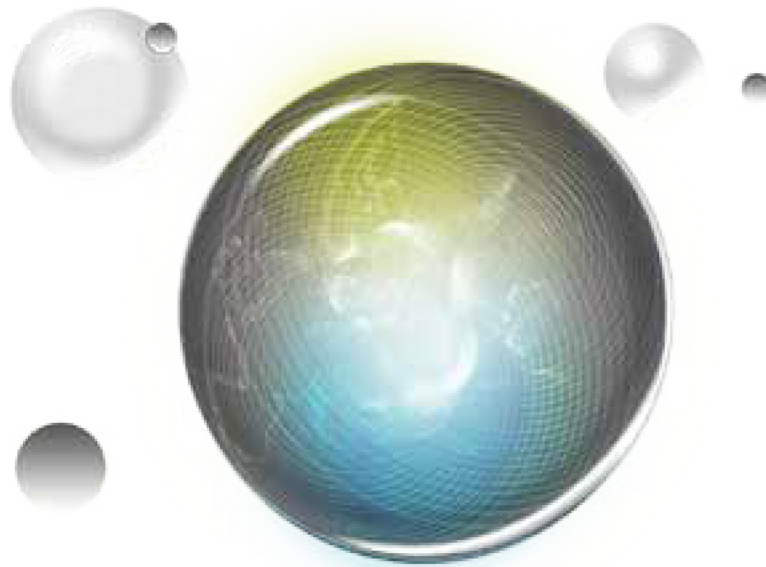


***Serious Games,
e-Learning &
Training***



LEADERGAME



Education field is changing. LEADERGAME moves forward and creates for you the tools of 21st century.

OUR HISTORY

Based on the experience and knowledge of MF & PARTNERS CONSULTING, consultant in management and human resources founded in 2000, LEADERGAME has been created in 2012 and takes over the serious games & e-Learning activities of the first company, with the same director.

LEADERGAME is a company specialised in training tools associating education and ICT (Information and Communication Technology). It is a complete range of serious games on personal skills and an online serious game on leadership that LEADERGAME offers you the possibility to do a blended training, or a to do it training on your own. Furthermore you can access to an e-Learning platform.



BONUS...

LEADERGAME associates its educational know-how and its knowledge of ICT to elaborate training tools adapted to the 21st century, which meets the expectations of the companies and their employees.

Used alone or on “blended”, our tools help companies to make a saving and promote colleagues learning by a better assimilation and a real post-training in the demand, without increase of costs.

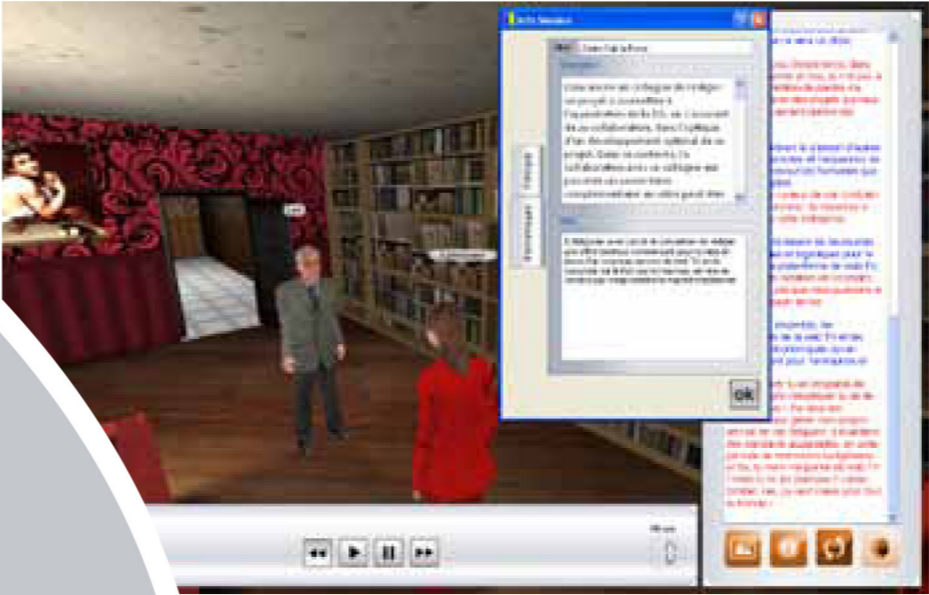
OUR PRODUCTS...

LEADERGAME offers you :

LEADERCRAFT

A range of flexible serious games available as off-the-shelf or as custom-made. A dozen games are already available. By using the technologies of the artificial intelligence, LEADERCRAFT allows you to test, to pull and to develop the key personal skills:

- Leadership
- Conflict management
- Communication
- Negotiations
- Assertiveness
- Communication skills



LEARN2LEAD

The only online multilingual serious game based on the full range leadership model. This game associate playful and instructive objectives and a video game design. By using LEARN2LEAD you can test and train your leadership skills in a huge company. You have 2 mains goals:

- Assure you that the company works effectively and in a productive way
- Assure you that your employees evolve in a harmonious way.



E-LEARNING

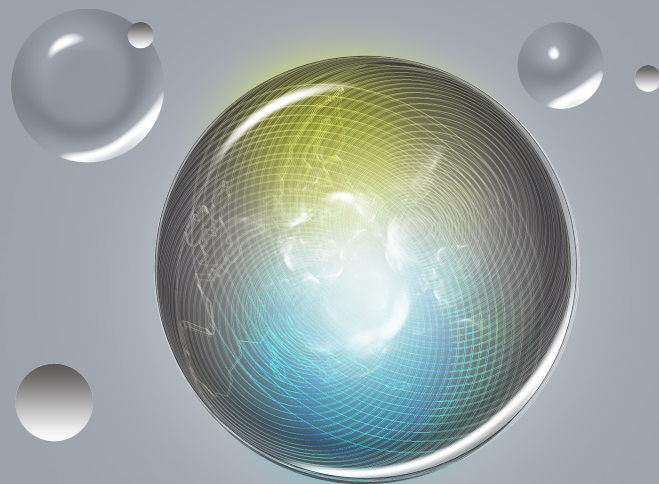
A platform of training in leadership, management, medical and paramedical care. Used only or in order to support serious games, a dozen modules are, already, available.

Every module of training arranges all the necessary elements so that the user experiments at best his distance training, worth knowing, tests of evaluation, and tutorials of the courts as well as questionnaires of satisfaction.

SAS au capital de 498 890 €
RCS Lyon 75334892928

28 Chemin de Vallombrey
69130 Ecully-F-
+33(0)975409078
+33(0)478850021

mf@leadergame.fr
leadergame.fr



LEADERGAME

